

SHARE:



[Join Our Email List](#)



FEED THE FUTURE

The U.S. Government's Global Hunger & Food Security Initiative

FEED THE FUTURE INNOVATION LAB FOR LEGUME SYSTEMS RESEARCH

March 2020



The Feed the Future Innovation Lab for Legume Systems Research fosters dynamic, profitable and environmentally sustainable approaches that contribute to resilience, productivity, and better nutrition and economic opportunities. The lab is managed by Michigan State University.

From the Management Office

COVID-19 Update

First and foremost, we hope that everyone reading this update is healthy and safe. The Legume Systems Innovation Lab's first concern is, and always will be, the safety and health of our researchers, partners, colleagues, families and friends in our global community. We are following the directives from governments at the local, state and federal levels, as well as USAID and Michigan State University on how to continue to work through this challenging time and will share updates with you as they become available.

Although plans have been changed and schedules rearranged, our commitment to the network we serve remains solid. As we rethink how we work, communicate and navigate in our global environment during the COVID-19 pandemic and beyond I am reminded of the resilience and ingenuity of humanity. Many resources are available virtually on how to help protect yourself from this pandemic and I encourage you to follow the directives from your local health authorities. Stay Safe.

Regards,

Barry Pittendrigh
Director, Feed the Future Innovation Lab for Legume Systems Research

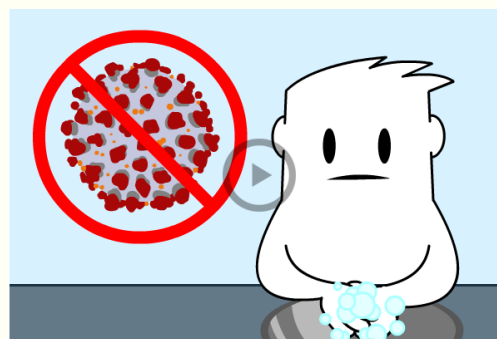
Protecting Yourself From Coronavirus

New Animation Ready for Global Distribution



PROTECTING YOURSELF FROM CORONAVIRUS

SAWBO (Scientific Animations Without Borders) has just released their newest animation, [Protecting Yourself from Coronavirus](#). COVID-19 has now spread around most parts of the world. This animation addresses best practices to protect against coronavirus through recommended preventative measures.



The immediate goal is global distribution of this animation into as many language variants as possible. If you are interested in translating this animation into your local language for greater distribution and reach, please email SAWBO at contact@sawbo-animations.org.

SAWBO is currently a Michigan State University-based initiative, which focuses on the development of educational content for people around the planet. We create animations and place them into local languages understanding that knowledge is power and that it needs to be accessible to all. SAWBO has over 75+ educational animations available in 100+ language combinations on numerous topics ranging from health care to agriculture. See our [video library](#) for a complete list of animations.

Global Convening 2020

Lab Meeting in Saly, Senegal Results in Legume Systems Strategy



Legume experts from the United States and Africa came together during a three-day working meeting held February 19-21 in Saly, Senegal. Discuss centered around how innovation projects across West and Southern Africa focused on cowpea and common bean systems can produce positive impacts by leveraging technology for effective systematic change. It was a busy three days filled with interactive sessions designed to better understand the legume system and how Legume Systems Innovation Lab projects and activities can make the greatest impact possible.

Legume Stakeholders from the US & Africa Working to Develop Strategies for Improved Systems



Dr. Nidiaga Cisse, Legume Lab West Africa coordinator addresses meeting attendees and provides valuable insight into the role of legumes in the African agricultural landscape.



Participants engaged in a "Gallery Walk" showcasing existing Legume Lab projects and provided feedback on how the research fits into overall lab goals and objectives.



Visioning activities challenged participants to envision potential futures for legumes research. High-level strategies were developed through this visioning.

Remarks from Opening Session Speakers



"The University of Thiès, which is a young university, is in a process of increasing momentum. The diversification of its training [offerings] and the strengthening and enlargement of its research teams are important strategic axes.

The Feed the Future Innovation Lab for Legume Systems Research program comes at the right time to lay the foundations for an effective and sustainable approach to the issue of legume systems research. "

Professor Ramtoulaye Diagne Mbengue, Recteur, University of Thiès



"Your research is a great contribution [to] the work we are doing because we have special concerns about [using] innovation, science and technology to bridge the gap ... to increase productivity, increase access to nutrition and the concept of nutritious food.

We see possibilities for collaboration, not just in Senegal but for West Africa and all of the missions... to scale up innovations we put in the hands of development workers."

Mr. Abdoulaye Dia, Agricultural Specialist at the Economic Growth Office, USAID Senegal

Legume Systems Innovation Lab Research to Explore Drought Tolerant and Improved Soil Solutions in Cowpea Production

Researchers from Senegal and Ohio State University will lead a project that focuses on the intercropping of shrubs into Senegalese cowpea fields to provide bio-irrigation. Shrubs have been shown to bio-irrigate crops, which combined with improved soil quality, significantly reduces crop water stress during in-season drought. The project is funded by USAID and managed by the Feed the Future Innovation Lab for Legume Systems Research at Michigan State University.

Farmers have used intercropping, the practice of growing more than one crop in the same plot of land, for centuries. Today as more information is known about how different plants interact with the soil and their environment, intercropping offers innovative solutions for farmers.

Optimized Shrub System (OSS): An Innovation for Improving Cowpea Yields & Strengthening Smallholder Resilience in Senegal, partners U.S. researchers from Ohio State University with Senegalese researchers from the University of Thies and the Senegalese Institute of Agricultural Research (ISRA-CERAAS).

The project objectives are to conduct on-farm trials comparing OSS with the traditional management system measuring impact on cowpea yield and feasibility of double cropping cowpea, adoption barriers, and socio-economic impacts; conduct component research to screen cowpea varieties best adapted for OSS; and conduct targeted outreach campaigns through field days and fact sheets and share results electronically with extension agencies, farmer cooperatives, women's organizations, and policymakers.

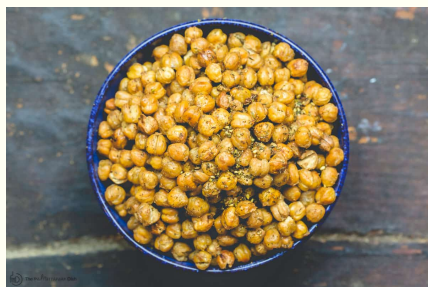


The field on the left shows sole cropping of millet while the millet field on the right incorporates optimized shrub intercropping. The project hopes to see similar results in cowpea fields.

(2016 millet in low rainfall season (318 mm) at long-term experiment, Kuer Matar, Senegal.)

Featured Legume of the Month

Chickpeas



Chickpeas, or garbanzo beans, are a great protein source. There are a lot of ways to incorporate them into your diet. One interesting way is by using chickpea flour. Visit this [Spruce Eats web page](#) to learn just how easy it is to make your own. Then, try out the recipe below.

Cooking with Chickpeas... Blueberry Chickpea Pancakes

Bet you have never tried chickpea pancakes?! Or maybe you have, and you know just how good they are!

Pulses.org has an amazing blueberry chickpea pancake recipe that is also gluten-free. It only requires five minutes of

prep time. Topped off with fresh blueberries and natural maple syrup, there are sure to be a hit with the entire family.

Give them a try this weekend or as an easy, healthy weeknight dinner.



[Get Recipe Here](#)

For More Information on the Feed the Future Innovation Lab for Legume Systems Research

[Visit our website](#)



This newsletter is made possible by the generous support of the American people through the United States Agency for International Development (USAID) under the Feed the Future initiative. The contents are the responsibility of Michigan State University and do not necessarily reflect the views of USAID or the United States Government.



MICHIGAN STATE
UNIVERSITY